

# Bureau of Children's Services

# Children's Long-Term Support (CLTS) Program

Mary Schmierer

Children's Long-Term Support (CLTS) Program

Children and Family Program Specialist

Presentation for Child Care Providers in the group "Wisconsin  
Early Childhood Action Needed"

Wednesday June 22, 2022, 6:30 to 7:15 p.m.



# Today's Conversation

- Overview of the Wisconsin Department of Health Services (DHS) and CLTS
- CLTS and child care
- CLTS coordination and resources
- Discussion

# Getting to Know DHS

- DHS is committed to protecting and promoting the health and safety of the people of Wisconsin, making sure everyone can live their best life.
- The Bureau of Children's Services (BCS), within DHS, administrates the locally operated CLTS Program. Counties work with families to help them receive the supports and services they need.

# Getting to Know BCS

Our bureau is responsible for administering eight children's programs. Collectively, our programs assist in the coordination of care for over 30,000 Wisconsin children with disabilities and expend \$200 million in federal, state, and local funds.

# Programs We Manage

- Children's Long-Term Support (CLTS) Program
- Birth to 3 Program
- Katie Beckett Medicaid
- Care4Kids (C4K)
- Children Come First (CCF)
- Wraparound Milwaukee (WAM)
- Complex Medical Care (CMC) Program
- Children's Community Options Program (CCOP)

# What is the CLTS Program?

The CLTS Program provides community-based supports and services from birth through age 21 for eligible children with long-term support needs.

CLTS is sometimes referred to as the “waiver” program for children.

# What is a Waiver Program?

- A waiver allows Medicaid to fund services and supports not normally covered by **Medicaid** to help children stay in their homes and communities.
- Wisconsin must get permission from the federal government by submitting a waiver application to waive certain Medicaid requirements to fund these additional services.
- The CLTS Waiver Application is renewed and federally approved every five years.
  - Current waiver cycle: 2022–2026

# Medicaid has Rules for Waiver Programs

- Outcomes of services must be connected to a child's disability.
- Money cannot be paid directly to a participant or family.
- Money cannot be used to pay for general living expenses such as mortgage/rent, utilities, internet, or food.

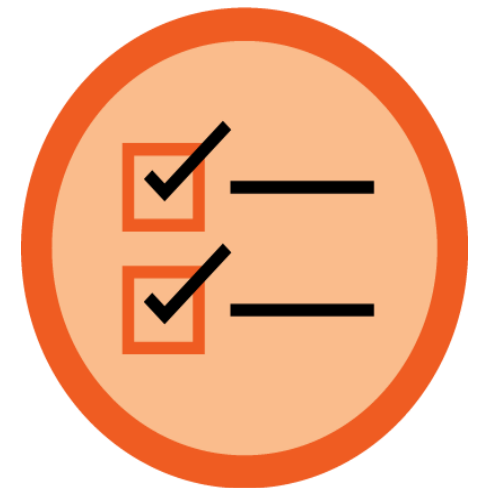


# CLTS, as a Waiver Program, Must Show These Things to the Federal Government

- Protection of participant's health and welfare
- Provider standards to meet the needs of the participants
- Individualized and person-centered services
- Program overall is more cost-effective than what would have been spent on institutional care

# CLTS Program Eligibility

- Be under 22 years old
- Meet an institutional level of care
- Meet nonfinancial and financial eligibility criteria for a full-benefit category of Medicaid
- Reside in a home and community-based setting



# CLTS Program Guiding Principles

- Every child should live their best possible life now and into the future.
- Focus on the strengths and resiliencies of children and families.
- Children are best served within the context of their family and community.



# Medicaid Versus CLTS

## Medicaid

- Regular health check-ups
- Any medically necessary services and aids

## CLTS Program

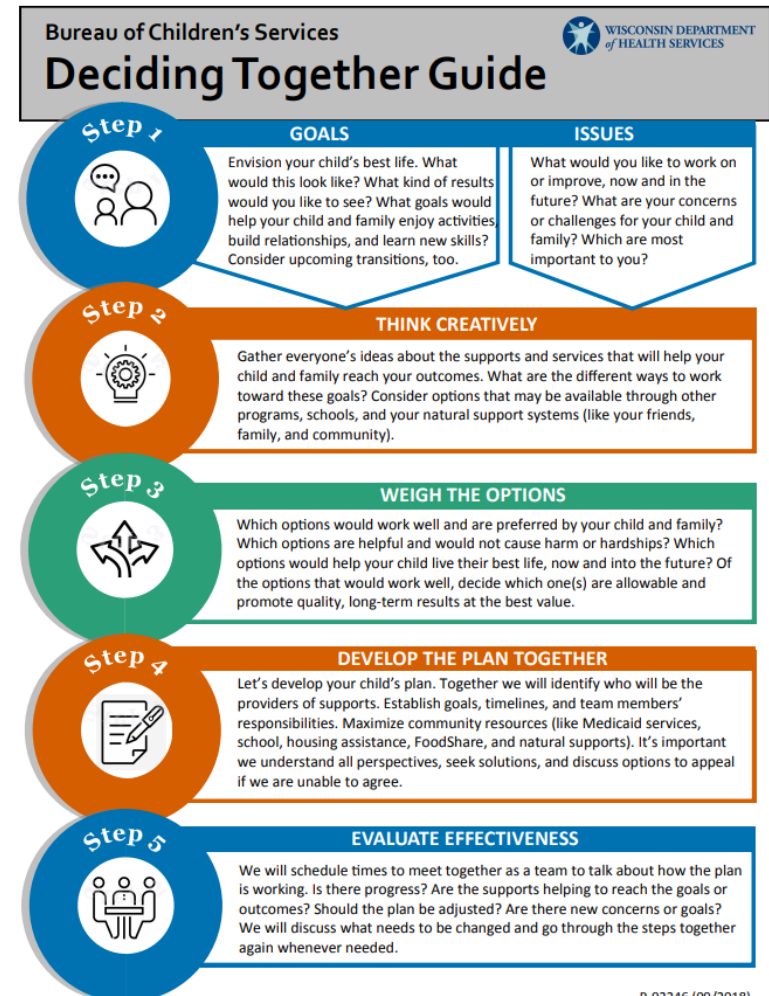
- Support services
- Teaching and skill development
- Adaptive and communication aids
- Housing-related services

outcome  
isp  
family  
child  
team  
goal  
ssc  
need

Deciding Together

# What is Deciding Together?

It is step-by-step guide for collaborative decision-making to develop individual service plans (ISPs).



P-02246 (09/2018)

# Deciding Together is a Conversation

- Roadmap for working on what better looks like for a participant.
- Identifies issues or goals to work on together in CLTS.
- Creates a unique plan.
- Explores and sets up the supports and services to help family to get to “better”.



# Need

A change that will help a child and family to live their best life.

# Goal

Something you want to see your child or family do to live their best life.



Items, Supports,  
and Services



## Outcome

What the future looks like for your child or family once the need or goal has been met.



# CLTS and Child Care

# Child Care and Inclusion

When a family and their Support and Service Coordinator (SSC) decide that child care will meet an outcome for the participant, the CLTS manual encourages them to explore options for community child care settings, as children can benefit from the opportunity to socialize and build friendships through group in-home child care and care provided by a child care agency.

# CLTS Definition of Child Care

Child care services ensure the participant's exceptional physical, emotional, behavioral, or personal care needs are met during times when their family members are working, pursuing education and employment goals, or participating in training to strengthen the family's capacity to care for the participant.

# Children Under 12 Years of Age

- Parents or guardians, not CLTS, are responsible for the basic cost of child care services for participants under 12 years of age.
- The CLTS child care service pays a supplemental cost of child care to meet the participant's exceptional care needs.
  - This includes staffing necessary to meet the participant's care needs above and beyond the cost of basic child care that all families with young children may incur.

# The Basic Rate of Child Care Is...

- The rate charged by and paid to a child care provider for children who do not have special needs.
- Determined by the child care provider for the participant under 12 years of age.
- The child care provider's same published rate for children who do not special needs.
- Established and applied consistently.

# Children Age 12 and Older

- The CLTS child care service may include the total cost of child care.
- The total cost of child care that CLTS will pay is based on a predetermined rate from the CLTS rate schedule.

# Why is This Different From What CLTS Pays for Children Under 12?

The total cost of child care is available when the participant has aged out of their traditional child care settings (typically available up to age 12), but due to a disability the participant continues to require care or supervision.

# CLTS Coordination and Resources



# Basic Information to Share with Families

- [Children's Long-Term Support \(CLTS\) Benefits at a Glance, P-02570](#)

This is a family friendly, easy-to-read flyer about CLTS services.

- CLTS Program [web page](#)
  - [CLTS County Contact Information](#)

Know how families in your county can apply for CLTS

# Become a CLTS Child Care Provider

- Read the service description for Child Care in the CLTS Waiver Program Manual ([P-02256](#)) (see 4.6.3 Child Care)
- How to Register to Become a CLTS Provider
  - [Provider registration Instructions Tip Sheet](#)
- For questions and support about the registration process, call 833-940-1576

# Stay Connected With the Family and CLTS

- Offer to attend a meeting with the family and their SSC to discuss child care and how the child is doing
- Share frequent updates and progress notes with the family
- Work to understand from families how the child is doing at home, find similarities and share how to work thru challenges in both environments. (This is also great information for the family to be able to share with their SSC.)

# Discussion

# Thoughts? Feedback? Questions?

**Children and Family Program Specialist Map**

**<https://www.dhs.wisconsin.gov/publications/p00996.pdf>**